

# BECOME AN EXPRESSIVE LEADER IN 2024!



Welcome to **BEL** – Experiential Learning for High Performing Leaders!

# Why become an Expressive Leader?

because expressive leaders  
are able to transform  
ideas and intentions into  
**Impacts and Outcomes.**





# How will becoming an Expressive Leader benefit me?

**Expressive Leaders know who they are,  
who they want to be, and what they want  
to accomplish.**

**They are confident in themselves and  
inspire confidence in others.**



# BEL Equips and Empowers **You** to:



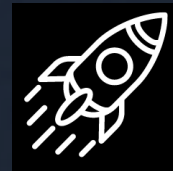
**Expand Understanding**  
of yourself and the world  
around you



**Forge Deeper  
Connections**



**Catalyze Change**



**Drive Results**



# ...so **you** can achieve powerful leadership outcomes...

- **Increased engagement** among employees and teams who report to you
- **Enhanced resilience** that empowers you to turn obstacles into stepping stones
- **Strengthened ability to inspire people** and teams you lead
- **Improved ability to manage conflict** productively





# BECOMING AN EXPRESSIVE LEADER

## THE 3-STEP 2024 BEL JOURNEY

### STEP 1

Launching  
the  
BEL Journey



### STEP 2

Learning  
and  
Transformation



### STEP 3

Creating  
Sustained  
Impact



# How **you** can become an Expressive Leader

## STEP 1

Launch your  
Expressive Leader  
Journey.

Simple, yet powerful  
activities to kickstart  
your path of learning,  
growth,  
transformation, and  
renewal



## STEP 2

## STEP 3

# STEP 1

Virtual,  
Before Bergamo

## Launching the BEL Journey

Start your BEL Journey immediately with simple, yet powerful activities to kickstart your path of learning, growth, transformation, and renewal.

Online Leadership Assessment

1:1 Coaching Discovery Session (Zoom)

Receive tailored to you developmental recommendations





# How **you** can become an Expressive Leader

## STEP 1

## STEP 2

## STEP 3

Transform yourself  
through Experiential  
Learning.

By unleashing the synergistic  
power of applied  
neuroscience, experiential  
learning and the arts, you will  
achieve remarkable self-  
confidence that grows from  
getting comfortable with  
being uncomfortable.



## STEP 2

# Learning and Transformation

3 days, In-person,  
in Bergamo



**Immerse**



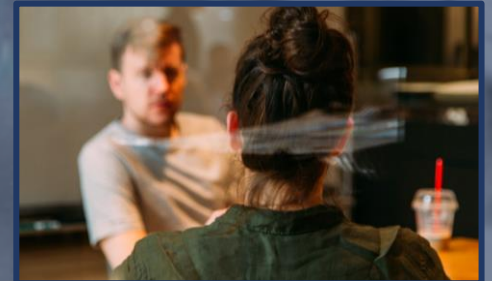
**Discover**



**Transform**



**Strengthen**



**Apply**



## STEP 2

# Learning and Transformation

3 days, In-person,  
in Bergamo

During your time in Bergamo, you will:

- See yourself and the world around you through new eyes, using the media of drawing and painting
- Forge new empathic connections through dynamic storytelling and improvisational theater
- Absorb the culture of high-performance ensemble collaboration from world-class musicians, in an intimate setting.
- Explore leadership in complex, uncertain environments with Suminagashi, an ancient Japanese form of painting on water





# How **you** can become an Expressive Leader

## STEP 1

## STEP 2

## STEP 3

Continue your  
Growth for  
Sustained Impact.

Coaching and “what’s  
next” support in an  
exclusive group of global  
leaders who convene for  
peer-to-peer learning &  
networking



## STEP 3

Virtual,  
After Bergamo

# Creating Sustained Impact

Your BEL Journey continues, after Bergamo!

Ensure lasting learning, experience new discoveries, and enhance your application and impact as an expressive leader.

Your 1:1 “What’s Next” Coaching Session  
(Zoom)

Join an **exclusive group of global leaders** for peer-to-peer learning & networking in a community



# BEL's Unique Learning Environment will:

- **Strengthen you as a leader today**
- **Transform you as a leader tomorrow**

## Your unique BEL learning experience will:

- **Bridge the gap between thinking and doing** through continuous focus on real-world application, ensuring that you are ready to immediately apply the skills and mindsets you acquire to your leadership role.
- **Offer you unparalleled opportunities to discover** new reflective and observational practices that will profoundly enrich the ways you understand and connect with your leadership ecosystem.





# BECOME AN EXPRESSIVE LEADER TODAY!

## BEL 2024 Dates

- **Step 1:** May 15 – June 13 (Virtual)
- **Step 2:** June 14 – 16, 2024 (Bergamo)
- **Step 3:** June 17 – July 30 and beyond (Virtual)

## Details

- **Location:** Virtual & Bergamo, Italy (near Milan)
- **Accommodation:** 4-Star Hotel in Bergamo
- **Historic Training Venue:** Museo delle Storie

## Price

- **€5000** plus VAT/IVA if applicable.
- **All inclusive**

**Registration is Now  
Open for BEL 2024!**



***Make 2024 your year to grow by  
Becoming an Expressive Leader!***



BEL grows out of a unique collaboration between  
Harvey Seifter and Dr. Isabella Fugaccia.

Isabella is a clinical neuroscientist, STEM industry entrepreneur, executive and team coach, learning designer and trainer, with two decades of experience strengthening and supporting leaders at all levels, from trainees to CEO's. From entrepreneurial startups to 100 of the Fortune 500, her unique multidisciplinary expertise transforms the ability of leaders and teams around the world to make good decisions, communicate with impact and catalyze change.

Harvey is CEO of two organizations - Creating Futures That Work®, the world's leading provider of experiential learning that uses the arts to build leaders; and The Art of Science Learning, a National Science Foundation-funded research center that uses the arts to spark innovation in science, technology and education. Through decades of groundbreaking research and practical experience working with leading companies all over the world, Harvey has built a unique and proven system for strengthening and developing leaders, teams and organizations, called the ABEL System. ABEL is the foundation on which we've built this program.

Together, Isabella and Harvey have worked with more than 40,000 leaders on six continents.

# BECOME AN EXPRESSIVE LEADER IN 2024!

**Registration is Now Open for BEL 2024!**

**Register now**

**Email:**

[if@isabellafugaccia.com](mailto:if@isabellafugaccia.com)

**or**

**Questions?**

**Email:**

[if@isabellafugaccia.com](mailto:if@isabellafugaccia.com)



**We're happy to help you become an expressive leader in 2024!**

Dr. Isabella Fugaccia  
Via San Francesco 9  
20024 Garbagnate Milanese  
Milan, Italy  
[if@isabellafugaccia.com](mailto:if@isabellafugaccia.com)

Harvey Seifter  
Creating Futures That Work  
230 East 48th Street  
10017 New York, NY, USA  
[hseifter@futuresthatwork.com](mailto:hseifter@futuresthatwork.com)





## CONTACT:

**Dr. Isabella Fugaccia**

Via San Francesco 9

20024 Garbagnate Milanese

Milan, Italy

[if@isbellafugaccia.com](mailto:if@isbellafugaccia.com)

# BECOMING AN EXPRESSIVE LEADER 2024

